



ART HOSTEL

**COMMISSIONS
2020
ARTIST BRIEF**

Hello

We are so pleased that you're interested in this commission call out. If you don't already know us – East Street Arts is a creative social enterprise and charity. We create space for making art, social events and learning opportunities to make our cities better places to live and work.

Our work can be seen on buildings, the high street and in neighbourhoods. We are here to support artists as we believe they have the talent, energy, ideas and determination to change our worlds.

In this pack we outline a series of commissioning opportunities for the Art Hostel, which is a project we have nurtured and grown for the last six years. We've faced some challenges and setbacks recently, but we are so excited to welcome artists into the new building to bring it to life!

Art Hostel started its journey down on Kirkgate in Leeds as a pop-up, and our new home for the permanent Art Hostel is in our neighbourhood of Burmantofts, Mabgate and Lincoln Green – where we've been based for the last 16 years. It's a really special place, and basing the Art Hostel here will hopefully give travellers and visitors a chance to experience a new side of the city that they might miss otherwise.

So, if you fancy helping us put the art into the Art Hostel then read on!

We encourage applications from those with less visibility in the arts. And we specifically welcome applications from LGBTQIA+, Disabled and Black, Asian and Minority Ethnic artists. Self-definition is at the sole discretion of the individual.

We are happy to make reasonable adjustments to the application process, the way we work and our working environment to adapt to the needs of artists experiencing access barriers. If you would like to have a conversation about access, just get in touch – our contact details can be found at the end of this information pack.

We can't wait to hear from you.
Karen, Jon and Emma
Co – Directors

HELLO ART HOSTEL MABGATE

“... Art Hostel has great character, chatty staff and, if you are in the arts, you will be among friends. Damn it, for all Leeds's frivolous flashiness, this place could just be proof that there is creative heft to this city after all.”

The Guardian



GOODBYE
ART HOSTEL
KIRKGATE LEEDS
2016-19



What is an Art Hostel?

The Art Hostel is a fully functioning backpackers' hostel that is designed, created and run by artists for curious travellers.

We had always dreamed of having our very own hostel. Inspired by the accommodation we've encountered on our travels, we saw a real opportunity to open something similar in Leeds. We wanted to provide a unique, alternative and affordable place for visitors from around the world to be welcomed to the city.

In 2015, we opened a temporary pop up Art Hostel #1 on Kirkgate in Leeds. It was an experiment. We wanted to see if a social enterprise of this kind could act as a gateway directly into Leeds' creative underbelly.

And it worked! In three years we welcomed 10,170 guests from 117 countries.

So now we're ready for the next challenge – opening the permanent home for the Art Hostel #2 in Leeds. We've purchased the building, the builders have finished and we're ready to start commissioning artists to bring it to life.

Why a Hostel?

There are a few reasons why we chose to open a hostel rather than a hotel. And that's mainly to do with our own reasons for choosing to stay in them when we're travelling.

Some of the definitions of 'hostel' that inspire us are:

- An establishment which provides inexpensive food and lodging for a specific group of people such as students, workers or travellers.
- A form of low-cost, short term shared sociable lodging where guests can rent a bed.
- Part of the sharing and circular economy.

Our key values driving the concept behind the Art Hostel are:

- Keeping costs low and supporting a circular economy
- Leading with a welcoming hospitality for all guests
- Access to experimental and engaging artworks
- An alternative, memorable offer for visitors to Leeds

We're lucky to now be part of an international network of hostel providers and professionals.

Who stays at the Art Hostel?

When we opened the doors in 2015 we welcomed a diverse range of national and international visitors to Leeds. We want to continue to be a destination and a place that feels right for them. The Art Hostel specifically welcomes:

- Curious travellers seeking something new and different.
- Artists and performers who are working temporarily in Leeds
- Visitors exploring jobs and career development
- Weekenders who want to access Leeds shopping and bar culture
- Volunteers from across the globe putting down temporary and sometimes longer roots
- Sanctuary Seekers accessing support and training opportunities
- Movers and shakers popping in for visits, tours and talks
- Audiences and participants attending a range of artistic and social events

Whether staying a week or popping in for 30 minutes we want everyone to feel comfortable, included and informed. We want people to come back again and again.

ART HOSTEL
EAST ST ARTS
LEEDS LS9 7DW

70? 190 70? 70? 190 70?
* * 900 * *



* * 330 * 900 CLEAR OPENING FOR WHEELCHAIR DISABLED ACCESS 330 *
DDA

Commissions

Between October 2020 - March 2021 we will install up to seventeen new commissions that respond to the building and its location, the history and culture of the neighbourhood, how it will function as a venue and our values associated with hospitality, the circular economy and FUN!

We are looking for artists, designers, makers and inventors who can help us create a unique, absorbing and playful environment that is both accessible and sustainable.

Each commission will:

- Embrace the Art Hostel and its visitors, volunteers and staff
- Be site specific and value experience and product equally
- Enhance the visitor experience by introducing them to innovative, thought provoking and playful ideas
- Make the Art Hostel a new, unique and surprising experience

Themes

The following themes; hospitality, shared and circular economies and fun, are a jumping off point that we personally find quite useful when thinking about how to approach developing the Art Hostel.

We are essentially looking for proposals that will help us turn individual rooms, corridors, social spaces, external spaces and the building as a whole into a creative, animated and functioning venue.

How visitors locate, travel to and stay in the Art Hostel, their first experience as they arrive and how they interact with the venue, the signage and navigation are all aspects of how we want to develop the commissions to create a unique environment and experience.

Hospitality

At the core of our work is this simple definition of hospitality: the friendly and generous reception of guests, visitors, or strangers.

Strangers and visitors as well as people staying that we know are all our guests and we want them all to have a good experience when they stay or connect with us.

We are interested in and continue to explore the role of the guest and the host as we recognise there are responsibilities on both parties.

What makes a good host?

What makes a good guest?

And how do we blur the boundaries between both by meeting and engaging at the Art Hostel

Shared and Circular Economies

Shared Economy: one that is not monetized or based on a capitalist system. A shared economy enables exchange, sharing and collaboration to flourish.

Circular Economy: aims to minimise waste, the continual use of resources and includes co-creation, recycling, re-paid and re-distribution to create a close-loop system. A system that is a closed loop is designed to make use of resources for as long a life as possible.

We believe the Art Hostel is the perfect place to apply the values of a shared and circular economy and to use them as a starting point to create a culture, environment and mutually beneficial Art Hostel for everyone involved.

We are particularly looking to commission artists who would like to develop work that considers:

- Developing appropriate in house skills
- Recycling strategies
- Waste management plans
- Exchange systems
- Peer and sector directories
- Cascading learning

And...

FUN!

As well as being a place to sleep, the Art Hostel is also somewhere to hang out, have a cuppa and meet new people. It might sound obvious, but more than anything we want our guests to have fun and these commissions play a really important role in that.

We want fun to be found all over the building. You might want to think about small interventions that could happen in the corridors. Or ways of surprising people nipping to the bathroom. Fun can exist in playful lighting, or anywhere you like really. Fun could also be a suggested route around the city, or something to listen to when you're on your way to leave.

“With people checking in from a range of destinations - Spain to Australia, China to Pakistan - the hostel is truly becoming a multicultural portal for visitors to come experience Leeds and all it has to offer.”

Independent Leeds

Exterior



What You Can Apply To Do

There are 11 commissions available for individual bedrooms, 1 commission to work on a bedroom with a local school and 4 commissions available that sit more broadly across the Art Hostel's spaces or activities. In your application, please let us know clearly whether you are responding to an individual bedroom or one of the wider commissions outlined below. You can apply for more than one.

Each artist/artist collective who's proposal is successful will also be asked to contribute to the organisations Artist Support programme and/or Neighbourhood Plan programme through:

- Artist talk
- Workshop
- Good practice guide

BEDROOMS

There are 12 bedrooms in the Art Hostel. These rooms are all slightly different in scale and shape and can sleep from two people to eight. Taking into consideration the themes outlined above, the function of the room and the discipline you work in please make sure we know you are applying for an individual bedroom commission.

WORKING WITH YOUNG PEOPLE

For one of the bedrooms we have partnered with a local primary school and are looking for an artist who loves working with young people. If you are interested in this commission please make that clear in your proposal and let us know what your ideas are around involving young people in the design and installation for this room. You will need to have your DBS in place and have had experience of working with children and young people before.

RESPONDING TO THE BUILDING

There are 4 commissions with specific remits that are aimed at responding to the building as a whole:

1. Reuse - recycle

Over the years East Street Arts has accumulated a range of old and tired furniture, materials left over from art events, vintage signage, and other bits and pieces. We live next door to Emmaus who sell second-hand furniture and other stuff, and we are just down the road from Leeds second hand market that takes place every Thursday.

We are looking for an artist/artist collective to come and play and turn materials, unwanted and discounted stuff into furniture, lighting, and other use-able pieces that can be positioned throughout the Art Hostel. Build and design the interior and re-purpose, re-use, re-design and re-make.

2. Cook Eat Share

The Art Hostel has a large open kitchen that is for everyone's use. As well as supplying a basic breakfast the room that is positioned in the middle of the Art Hostel, and is a place for cooking, sharing, eating and making friends. It is at the moment a large empty space that needs to be designed and brought to life. We are looking for an artist/artist collective that is interested in developing a functioning kitchen that is also a joy to be in. As well as considering the physical space, we would like the artist to lead on a series of events that brings the kitchen to life and invites people to come and eat together.

cont.

What You Can Apply To Do cont.

3. Green Fingers

Right now the Art Hostel is empty. When it opens, we hope it will see hundreds of visitors from all over the world coming and going to sleep, play, meet, work, eat and drink. This means we are in a great position to invite an artist/artist collective to respond to our commitment to climate change. We are interested in how we manage our waste, make use of natural resources such as rain water, explore our purchasing, minimise our contribution to landfill and create a green oasis. How do we make a living, growing building? How do we reduce pollution from nearby traffic? And how do we share good practice with our visitors? These and other questions form our thoughts around making the Art Hostel green and alive.

4. Sign Maker

From early civilisations we have used signage to quickly and efficiently identify routes, uses of buildings and indicate who is welcome.

The Art Hostel is a new venue and in a new area of the city and we are inviting an artist/artist collective to be playful and think about signage, maps, routes, identity and location. We are interested in using different materials and disciplines, using traditional materials and formats alongside new technologies to help visitors locate the Art Hostel, and to navigate the building.

This is an opportunity to take the Art Hostel and East Street Arts brands and be inventive, experimental and at the same time to play a very important part in place-making in Mabgate.

We are able to develop these commissions through our fundraising and income generation. A significant part of the funds raised are through our kickstarter and through the support of businesses, organisations and individuals that have been kind enough to sponsor the project. So we would like to say a big thank you to:

Everyone who donated to the kickstarter

Mick Ward

Gill Crawshaw

Yorkshire Property Charity

Kinrise

Leeds Dock

Thompson Brand Partners

Unlimited

Interior



The Practicalities

If you are interested in applying and want to do a site visit first you can arrange to visit the building by contacting Karen Watson at: karen@esamail.org.uk
Please note that they are limited just now due to ensuring safety during Covid 19.

If you can't visit, the information below should help you understand the layout, size and location of the building.

Details of the building

The Art Hostel is one of a series of former Catholic church buildings (St Patrick's) that nestles behind our main art space, Patrick Studios and alongside our new technology, environment and art space Convention House. Together the three venues create a micro-climate of makers, researchers, travellers, artists and others all living, working and staying in an area of Leeds that is rich in history.

Facing out onto the A64 fly-over the Art Hostel is on New York Road and accessible via the creative and arts venues on Quarry Hill, right on the edge of the city centre.
Maps are included further on.

It was built circa 1900 from red bricks and has a domestic feel from its former time as the presbytery. The venue includes:

- 12 bedrooms of different sizes and shapes including dorm rooms, family rooms and double rooms (some with en-suite)
- A kitchen and eating area for everyone's use
- Shared showers
- Spacious corridors and landings
- A reception area with a place to sit, show work or have a small event
- An outdoor courtyard and sitting area at front and side

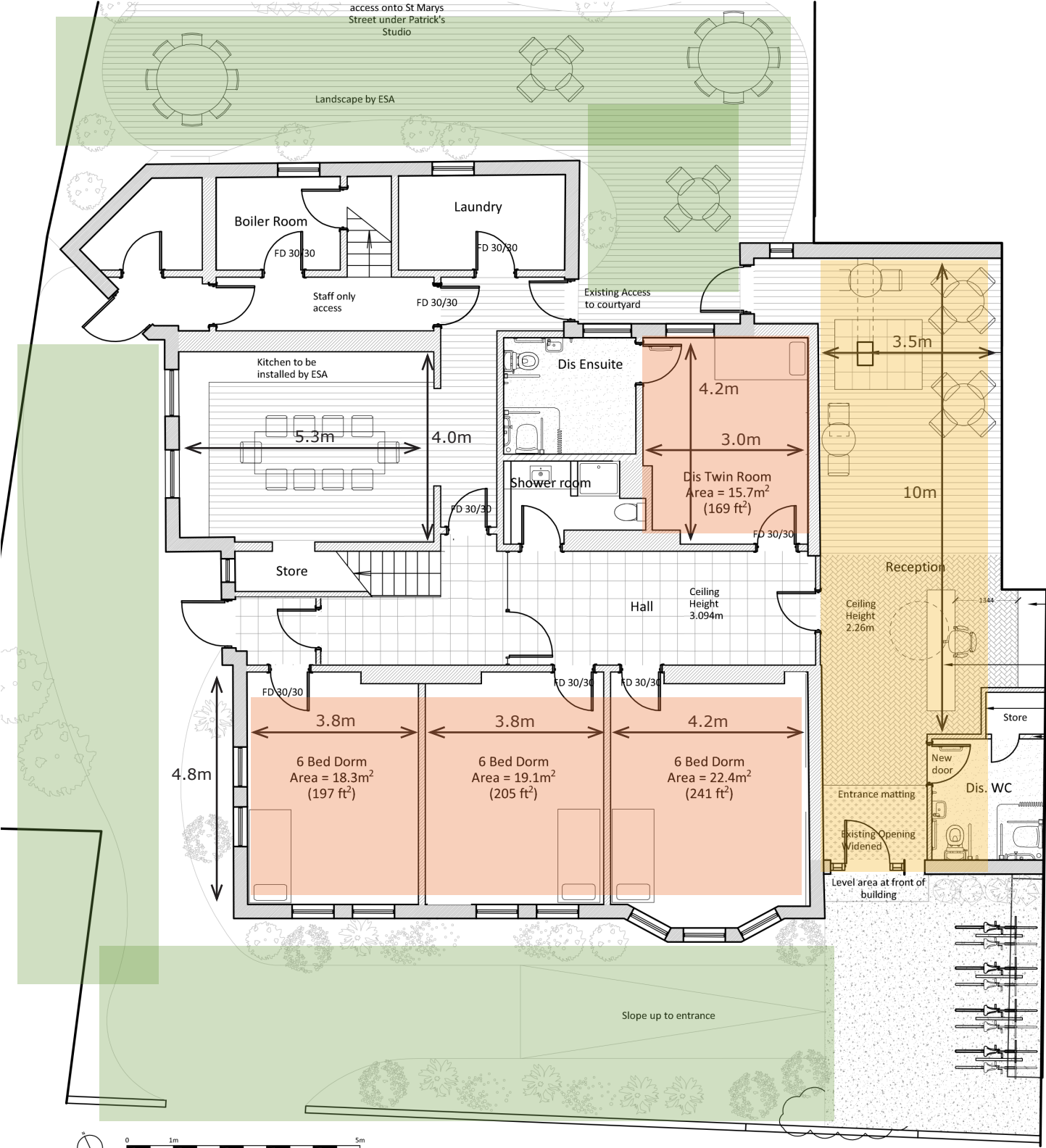
Across three floors

All of the rooms and spaces in the building are up for grabs and possible locations for each commission. Depending on your proposal, we will work with you to confirm the most appropriate option.

All the rooms have been designed and re-built with the intention to keep as much of its history as possible intact. Newly plastered and tiled walls sit alongside others that retain original textures and features.

Floor plans can be found further on.

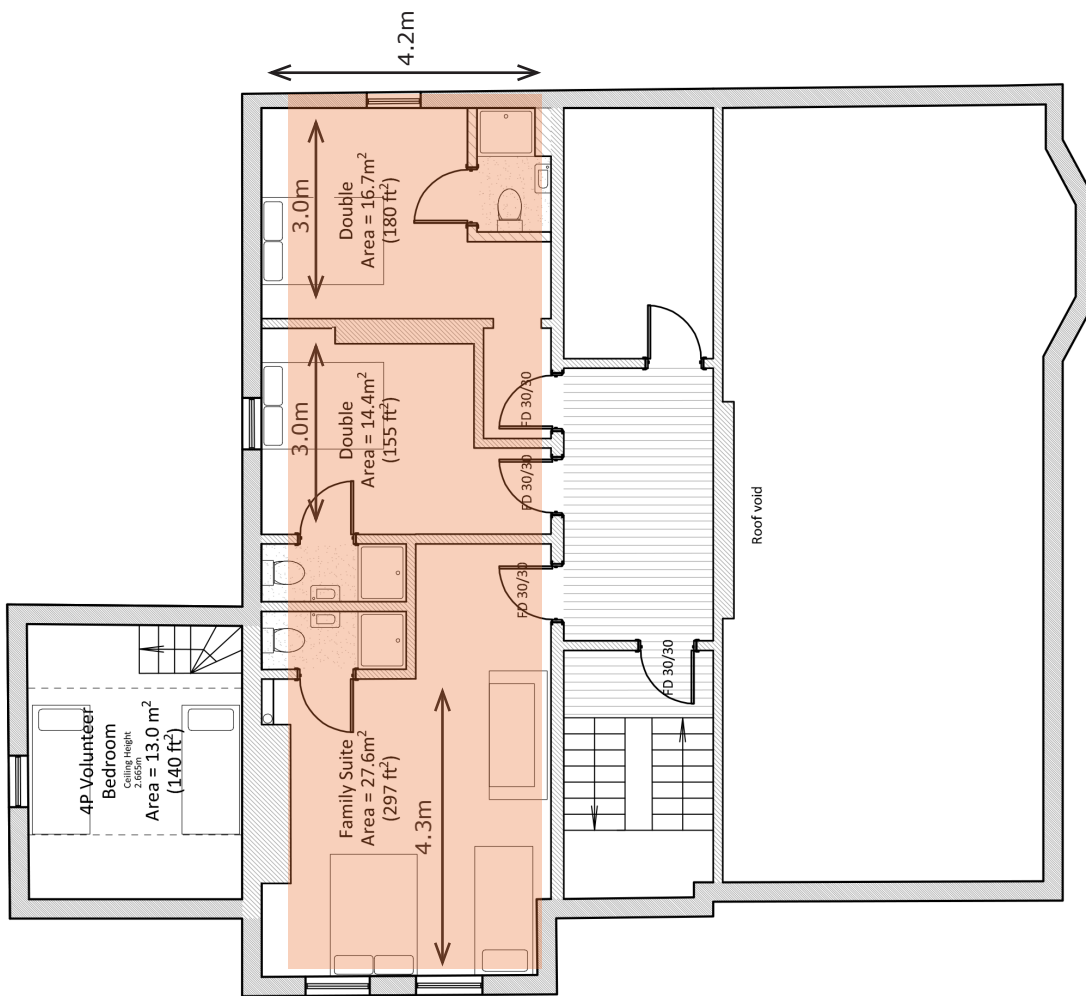
Ground Floor



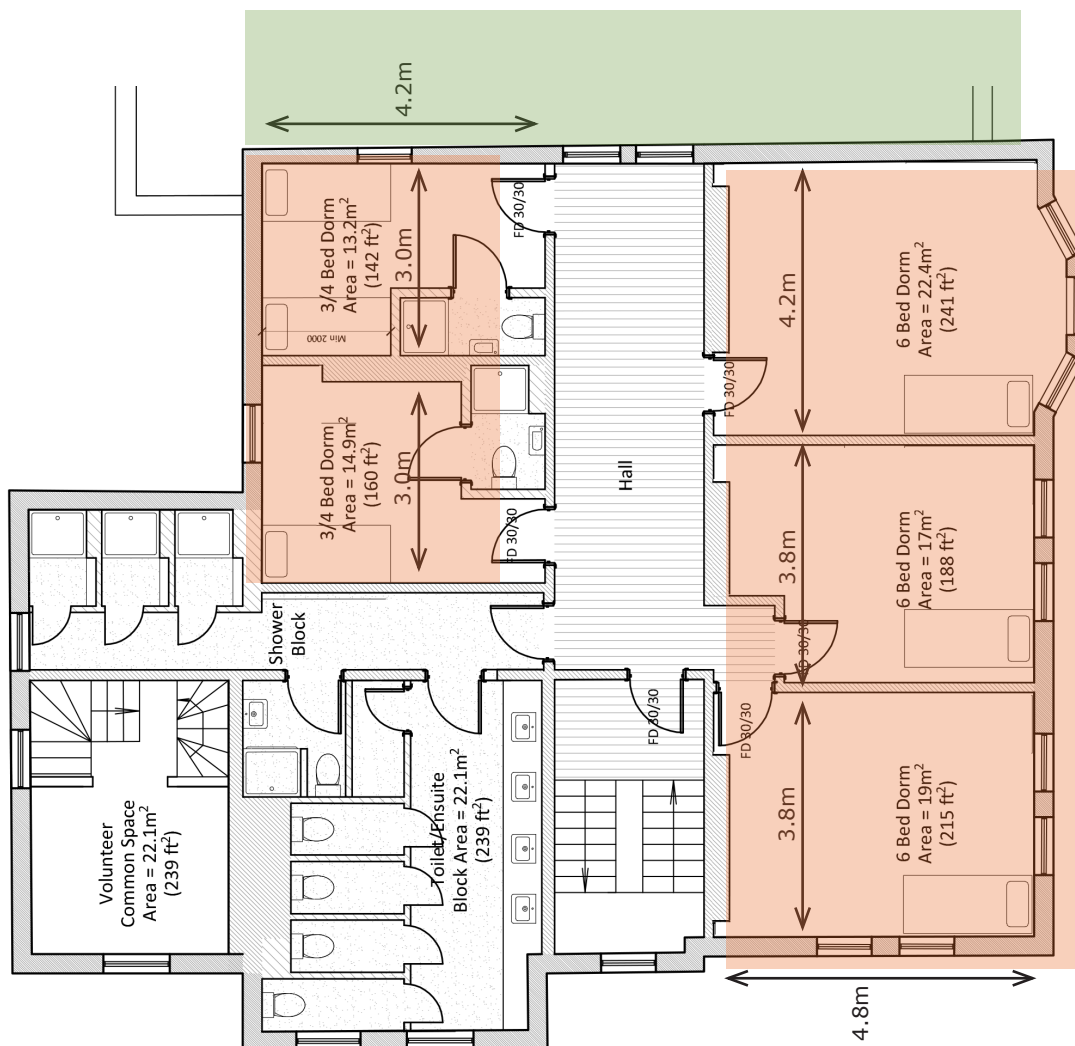
Rooms

Public Access

Outdoor Space



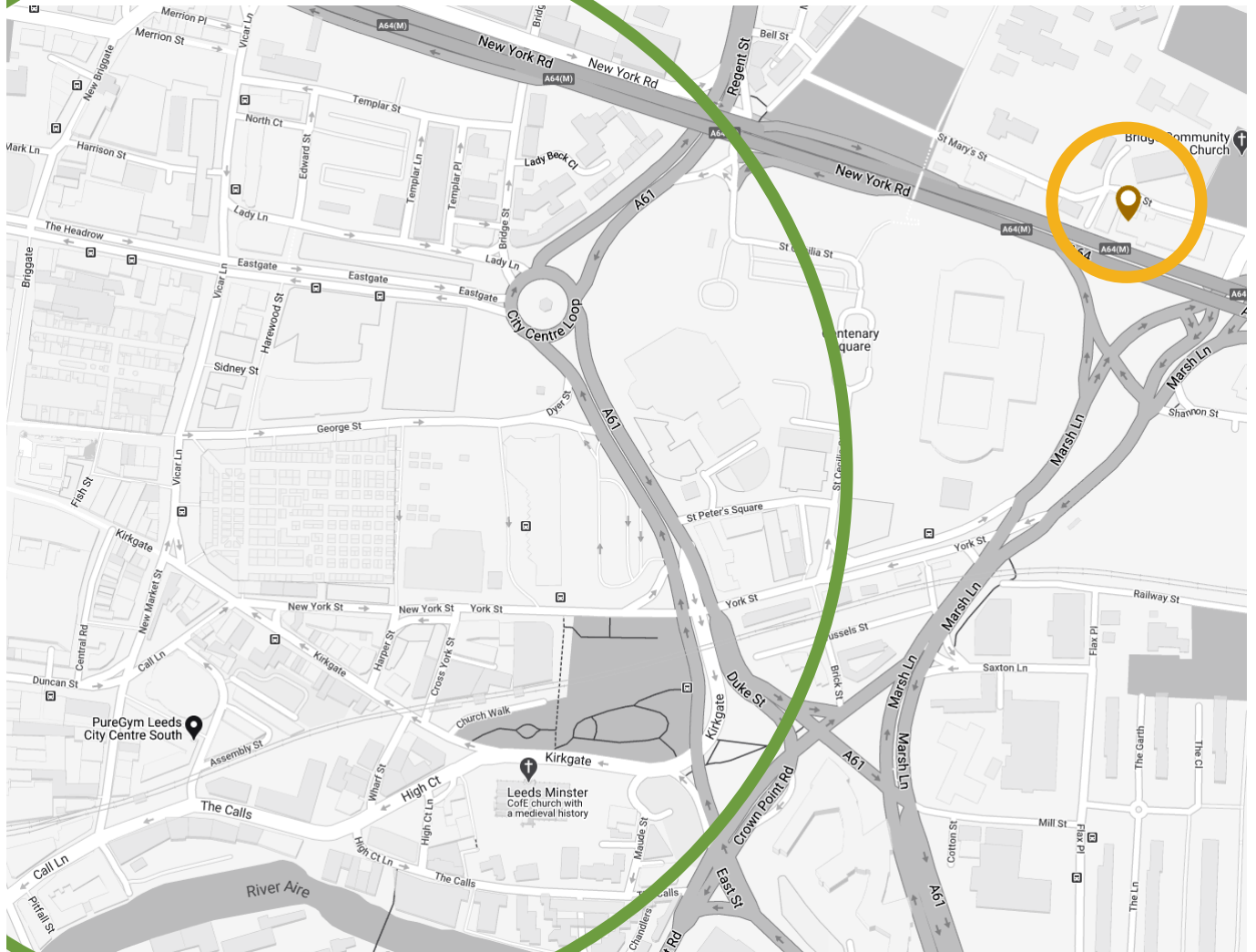
Second Floor



Rooms

Roof Top Garden?

Location



Budget

Each artist commission is split between:

Artist Fee - £2000
Artist Materials - £2000

We will retain the materials budget and support you to think about the best way of utilising and spending it. If the full £2000 isn't needed or spent, we will utilise it in another part of the building to support another commission.

We will support you with the install, sourcing and cover the costs of furniture unless your proposal includes very bespoke pieces.

The exact budget for each commission will be determined based on each idea and after further conversations with us, to see where we might be able to keep material costs to a minimum.

We are also able to offer free accommodation in our neighbouring building Convention House, where artists might be travelling to the city from further afield.

Timeline

We are aiming to open the new Art Hostel in April 2021. In the circumstances this could change, but we will keep you regularly informed.

A rough timeline for commissions is:

October 2020 - confirm all commissioned artists including an outline of the proposal, budget and production spec.

November 2020 to February 2021 - staggered install of commissions

March 2021 - testing of the building with small groups of visitors

April 2021 - launch and opening

We will at all steps prioritise the safety of the artists we are working within the context of COVID-19 and can provide more information on risk assessments, installation processes and how we will ensure social distancing.

How to apply

Please submit:

- A proposal no more than 2 pages that outlines your idea for the Art Hostel
- Your availability for being onsite for installation between November 2020 - February 2021. We are doing a staggered install in order to ensure minimal people are working in the building at once to ensure we are meeting social distancing guidelines.
- Up to 5 images and 1 video of your previous work, where this helps to illustrate your practice

Drawings and designs are not required at this stage but you are welcome to submit visual aids where this helps to better illustrate your ideas.

If you would prefer to make an application by video or voice recording, it should be no longer than 5 minutes and be provided as a google link.

Deadline for applications

Applications are due for submission by:
14 October 2020, 5pm

To:
Karen@esamail.org.uk

Please title emails:
ART HOSTEL APPLICATION

We will aim to get back to you by 21 October 2020

If you are interested but need more information before applying, we would love to hear from you.

Please contact Karen Watson (Artistic Director) on: karen@esamail.org.uk



rens
10

nese

EAST ST ARTS
making space for artists
registered charity 1077401
eaststreetarts.org.uk
[@eaststreetarts](https://www.instagram.com/eaststreetarts)

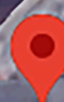


Supported using public funding by
**ARTS COUNCIL
ENGLAND**

arts@leeds



Leeds
CITY COUNCIL



Art Hostel
Funky lodging
former wareh